



## Office of the Ohio Consumers' Counsel

Your Residential Utility Consumer Advocate

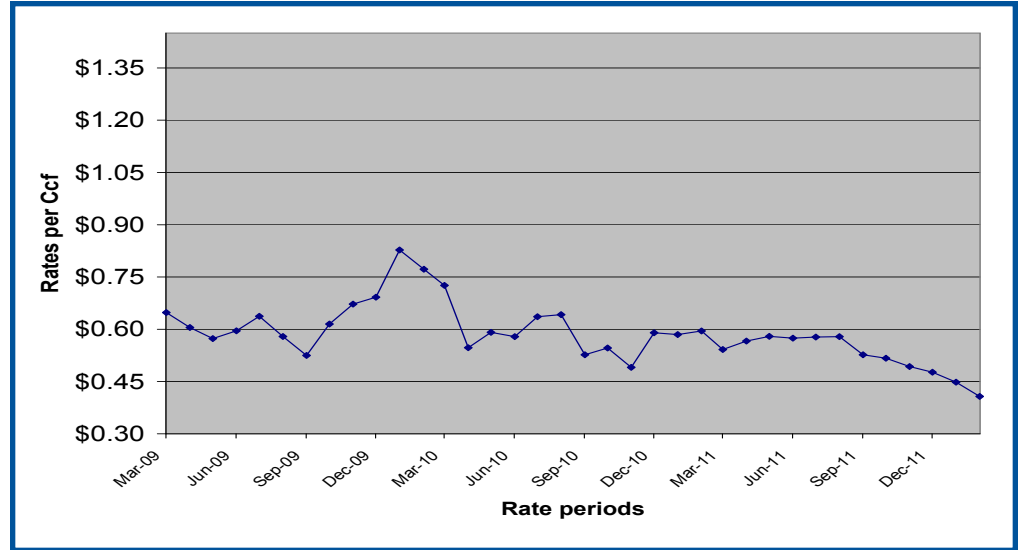
# HISTORICAL RATE CHART

Office of the Ohio Consumers' Counsel  
10 West Broad Street  
Suite 1800, Columbus, OH  
43215-3485

E-MAIL:  
occ@occ.state.oh.us

WEBSITE:  
www.pickocc.org

# VECTREN ENERGY DELIVERY OF OHIO: HISTORICAL NATURAL GAS RATES



**UPDATED: Feb-12**

*This publication is updated monthly.*

### About these charts

These charts were created to provide Vectren Energy Delivery of Ohio customers with historical information about the company's natural gas rates.

The rates listed from April 2010 and going forward reflect the SCO; rates from October 2008 through March 2010 reflect the SSO; rates prior to October 2008 reflect the GCR.

**For more information about Vectren's natural gas rates, please refer to:**

*Comparing Your Energy Choices* [http://www.pickocc.org/publications/natural\\_gas/Comparing\\_Your\\_Energy\\_Choices\\_VECTREN.pdf](http://www.pickocc.org/publications/natural_gas/Comparing_Your_Energy_Choices_VECTREN.pdf) or *Vectren Standard Choice Offer: Frequently Asked Questions* [http://www.pickocc.org/publications/natural\\_gas/Vectren\\_SCO\\_FAQ.pdf](http://www.pickocc.org/publications/natural_gas/Vectren_SCO_FAQ.pdf).

### Historical rates per Ccf

12/01/08	\$0.936	01/01/10	\$0.827	02/01/11	\$0.595
01/01/09	\$0.860	02/01/10	\$0.772	03/01/11	\$0.542
02/01/09	\$0.691	03/01/10	\$0.726	04/01/11	\$0.566
03/01/09	\$0.648	04/01/10	\$0.547	05/01/11	\$0.580
04/01/09	\$0.605	05/01/10	\$0.591	06/01/11	\$0.575
05/01/09	\$0.573	06/01/10	\$0.578	07/01/11	\$0.578
06/01/09	\$0.596	07/01/10	\$0.636	08/01/11	\$0.579
07/01/09	\$0.637	08/01/10	\$0.642	09/01/11	\$0.527
08/01/09	\$0.579	09/01/10	\$0.527	10/01/11	\$0.517
09/01/09	\$0.525	10/01/10	\$0.546	11/01/11	\$0.493
10/01/09	\$0.615	11/01/10	\$0.491	12/01/11	\$0.476
11/01/09	\$0.672	12/01/10	\$0.590	01/01/12	\$0.448
12/01/09	\$0.692	01/01/11	\$0.585	02/01/12	\$0.407