



Office of the Ohio Consumers' Counsel

Your Residential Utility Consumer Advocate

HISTORICAL RATE CHART

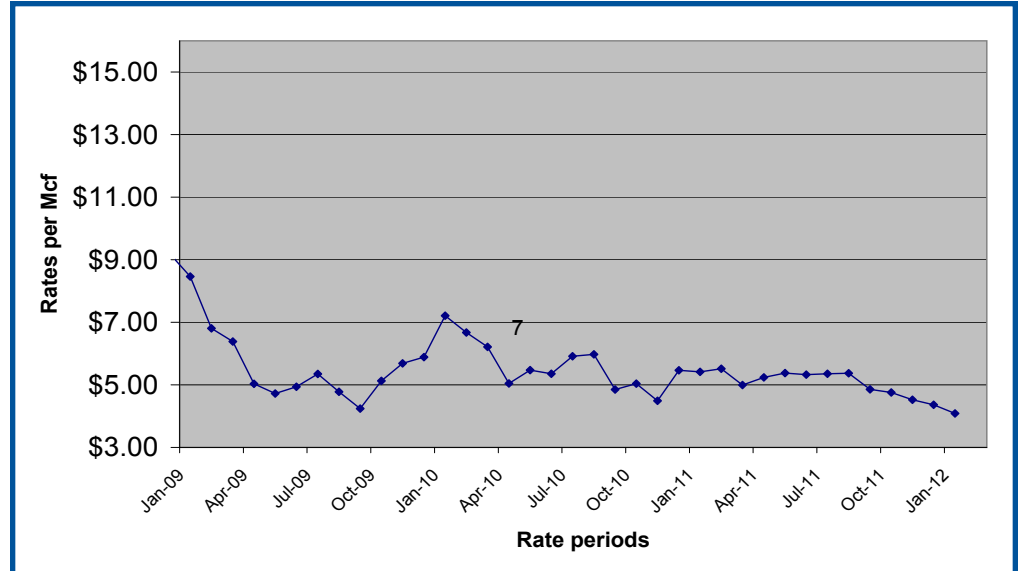
Office of the Ohio Consumers' Counsel

10 West Broad Street
Suite 1800, Columbus, OH
43215-3485

E-MAIL:
occ@occ.state.oh.us

WEBSITE:
www.pickocc.org

DOMINION EAST OHIO GAS: HISTORICAL NATURAL GAS RATES



UPDATED: Jan-12

This publication is updated monthly.

About these charts

These charts were created to provide Dominion East Ohio customers with historical information about the company's natural gas rates.

The rates listed for April 2009 and going forward reflect the SCO; rates prior to March 2009 reflect the SSO.

For more information about Dominion's natural gas rates, please refer to:

Comparing Your Energy Choices http://www.pickocc.org/publications/natural_gas/Comparing_Your_Energy_Choices_DEO.pdf or *Dominion East Ohio SCO: Frequently Asked Questions* http://www.pickocc.org/publications/natural_gas/Dominion_SCO_FAQ.pdf.

Historical rates per Mcf

11/12/08	\$8.799	12/16/09	\$5.886	01/14/11	\$5.416
12/16/08	\$9.218	01/19/10	\$7.214	02/14/11	\$5.516
01/20/09	\$8.466	02/17/10	\$6.674	03/15/11	\$4.993
02/18/09	\$6.806	03/18/10	\$6.216	04/14/11	\$5.240
03/19/09	\$6.386	04/16/10	\$5.042	05/12/11	\$5.377
04/20/09	\$5.031	05/17/10	\$5.471	06/13/11	\$5.326
05/19/09	\$4.721	06/16/10	\$5.355	07/13/11	\$5.357
06/18/09	\$4.938	07/16/10	\$5.917	08/11/11	\$5.370
07/20/09	\$5.366	08/16/10	\$5.974	09/12/11	\$4.857
08/18/09	\$4.779	09/15/10	\$4.851	10/11/11	\$4.759
09/17/09	\$4.243	10/14/10	\$5.037	11/09/11	\$4.524
10/16/09	\$5.130	11/12/10	\$4.492	12/09/11	\$4.364
11/16/09	\$5.689	12/14/10	\$5.467	01/12/12	\$4.084